

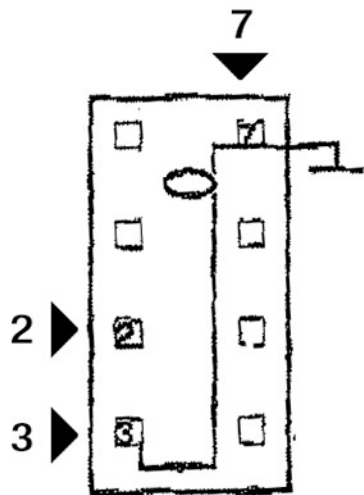
V1D1B60B Switch/ Lamp Wiring



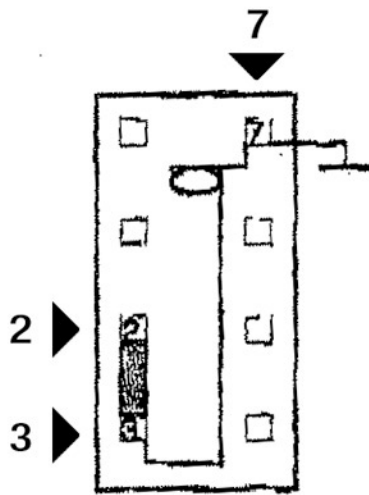
The Quality
Choice

Pos 1 - OFF

Pos 2 - ON
LAMP LIT



switch in off position-
bottom of rocker
depressed



switch in on position-
top of rocker depressed

Power to be applied to terminal 2.

Load terminal is 3. Ground for the lamp is 7