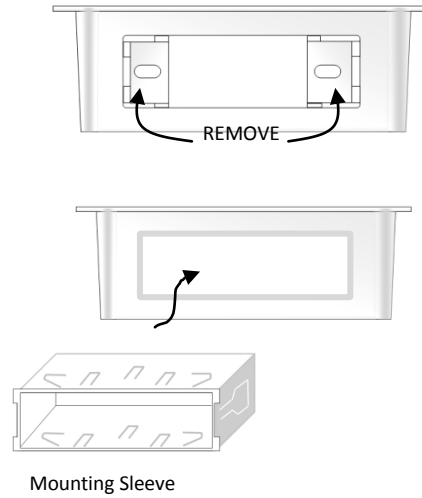


# Mounting instructions

## For DIN style Radios with Sleeve Mount:

Use a utility knife to remove the Post Mount inserts.  
 Insert the Mounting Sleeve and bend the Securing  
 Tabs to hold the Sleeve in place

Follow the Manufactures directions for mounting  
 and electrical hookups



## For Post style Mount radios:

Leave the inserts in place. Follow the  
 manufactures directions for mounting and  
 electrical hookup

## Mounting Positions

# be mounted on any  
 overhead Panel, Shelf top or under dash surface  
 that provides a flat surface of sufficient strength  
 to fasten to .

After mounting the radio, use the Self Tapping  
 screws provided to attach the housing. Make  
 sure the position does not obstruct the operators  
 view or control.

